

7TH

28-29 MAY 2021

PAN-PACIFIC NURSING CONFERENCE

*From Evidence to Impact:
Co-designing Care for Future*

Announcement

Organiser

The Nethersole School of Nursing, Faculty of Medicine, The Chinese University of Hong Kong

Collaborating organisations



Y.K. Pao Foundation Centre
for Nursing Excellence in Chronic Illness Care

Sponsors



Supporting organisations



Baylor University
LOUISE HERRINGTON SCHOOL OF NURSING



King's College London
St George's
University of London



Manchester
Metropolitan
University



PennState
College of Nursing

UCLA School of Nursing

THE UNIVERSITY OF
NEWCASTLE
AUSTRALIA



This material / event is funded by the Professional Services Advancement Support Scheme of the Government of the Hong Kong Special Administrative Region.

Any opinions, findings, conclusions or recommendations expressed in this material/any event organised under this project do not reflect the views of the Government of the Hong Kong Special Administrative Region or the Vetting Committee of the Professional Services Advancement Support Scheme.

Welcome Message

As the newly appointed Director of the Nethersole School of Nursing at The Chinese University of Hong Kong, I am very pleased and honoured to warmly welcome all delegates worldwide to our Seventh Pan-Pacific Nursing Conference and pre-conference workshops on 26-29 May 2021.

Over the years, the Pan-Pacific Nursing Conference has been an international platform to bring global multi-disciplinary health care providers, policy-makers, academics and researchers together to address significant regional or global health issues or challenges. The previous six conferences have been proven successful in exploring effective strategies and innovations and facilitating international collaborations to address these challenges in health promotion and interventions for individuals, communities and patient groups in need.



The upcoming seventh conference, themed “From Evidence to Impact: Co-designing Care for Future”, aims to strengthen or intensify the significance and impact of research evidence to improve health and social care management and outcomes in national and global contexts. We have invited internationally renowned scholars and experts to be our keynote, plenary and symposium speakers to share their insightful views and experiences with delegates. The delegates will also have ample opportunities to debate on a wide range of sub-themes and topics such as acute and critical care, aged and chronic illness care, cancer and palliative care, behavioural and mental wellness, and health system, policy and leadership. In addition, there will be 2-day pre-conference workshops on design and implementation of systematic review and the use and dissemination of the review evidence.

With your active participation and valuable support and contribution, the conference would definitely be very successful. Every delegate’s active involvement in the scientific and networking activities can broaden his/her global vision and international links, as well as knowledge and skills in translating research evidence into effective practice contributing to better health outcomes.

In celebrating our School’s 30th Anniversary, the conference is one signature event to celebrate this important milestone marking the School’s success over the past three decades. Building on the past successes, we are confident to make this conference another fruitful experience for all delegates.

We look forward to meeting and welcoming you at the conference.

Wai Tong CHIEN
Director and Professor
The Nethersole School of Nursing
Faculty of Medicine
The Chinese University of Hong Kong



Our School

The Nethersole School of Nursing, formerly Department of Nursing, was established under Faculty of Medicine, The Chinese University of Hong Kong in 1991. It is the first university department of nursing in Hong Kong. The School focuses on high quality, innovative nursing and health education and research to prepare and support nurses to commit themselves to improving health outcomes for individuals and communities locally, regionally and globally, as well as facilitating nursing development in Hong Kong. With the generous support of the Alice Ho Miu Ling Nethersole Charity Foundation, the School has further invigorated its commitment to pursuing excellence in nursing education, research and practice under the name of “The Nethersole School of Nursing” since 1 January 2002. According to the QS World University Rankings 2021 – Nursing, the School has been ranked the top one in Hong Kong and Asia, and the 22nd in the world.

In addition to nursing education, the School has also provided gerontology education tailoring to the needs of the rapidly ageing population in Hong Kong since 2012. Undergraduate and postgraduate educational programmes and qualifications from the School have enhanced career progression of our graduates locally and internationally.

Supporting Organisations

- Asian and Pacific Alliance for Nursing Education (APANE)
- College of Nursing, Taipei Medical University, Taipei
- College of Nursing, The Pennsylvania State University, Pennsylvania
- College of Nursing, Yonsei University, Seoul
- Department of Nursing, College of Medicine, NCKU, Tainan
- Department of Nursing, Manchester Metropolitan University, Manchester
- Faculty of Health, Social Care and Education, Kingston University and St. George's, University of London, London
- Faculty of Nursing, Health Science Centre, Xi'an Jiaotong University, Xi'an
- Louise Herrington School of Nursing, Baylor University, Texas
- School of Nursing, Fudan University, Shanghai
- School of Nursing, NTU, Taipei
- School of Nursing, Shandong University, Shandong
- School of Nursing, The University of California, Los Angeles
- School of Nursing and Midwifery, La Trobe University, Melbourne
- School of Nursing and Midwifery, The University of Newcastle, Newcastle
- West China School of Nursing, Sichuan University, Sichuan



Conference Aim

To bring together health care practitioners, policy makers, academics and researchers from different countries and cultures in expanding the impact of research evidence to improve health and social care management and outcomes in the local, regional and global contexts.

Conference Objectives

- To provide an international multidisciplinary platform for renowned scholars, academics, doctors, nurses and paramedical personnel to co-design quality care based on research evidence.
- To enhance health care professionals' competence in translating research evidence into safe and effective practices for meeting current and future health care needs.
- To increase Hong Kong's visibility and reputation, regionally and internationally, in developing evidence-informed health care practices, care models and public health policies.

Conference Sub-themes

- Acute and critical care
- Aged care and chronic illness management
- Cancer and palliative care
- Mental health issues
- Health system, policy and leadership
- Innovative practice

Workshop Objectives

- To enable participants to understand and interpret systematic reviews and meta-analyses.
- To equip participants with knowledge and skills in planning and conducting Cochrane Reviews.



Conference Programme (Day 1)

Time (GMT +08:00)	28 May 2021 (Friday)	
0845 – 0900	Registration	
0900 – 0925	Opening Ceremony	
0925 – 1010	Keynote Address I Professor Barbara RIEGEL , University of Pennsylvania <i>"Co-designing Care to Improve Self-Care"</i>	
1010 – 1110	Plenary Session I Professor Jennifer Hagerly LINGLER , University of Pittsburgh <i>"Re-imagining the Role of the Nurse in the Era of Precision Health: The Alzheimer's Disease Example"</i> Professor Elizabeth PETER , University of Toronto <i>"Beyond Moral Distress during the COVID-19 Pandemic: Designing the Care of Nurses"</i>	
1130 – 1230	Meeting with Presenters Shortlisted For Best Oral Presentation Awards	Meeting with Presenters Shortlisted For Best Student Oral Presentation Awards
1230 – 1330	Break	
1330 – 1430	Plenary Session II Professor Patricia M. DAVIDSON , University of Wollongong <i>"Lessons Learned, Emerging Better and Strong following COVID-19"</i> Professor Richard John GRAY , La Trobe University <i>"The Potential of Lay- and Peer-health-workers to Deliver Evidence Based Psychosocial Treatments"</i>	



Conference Programme (Day 1) *[Continued]*

Time (GMT +08:00)	28 May 2021 (Friday)
1430 – 1530	<p>Symposium on Stroke Care: Towards a More Complete Stroke Recovery</p> <p>Dr. Bonnie Yin Ka LAM, The Chinese University of Hong Kong <i>"Vascular and Neuroimaging Risk Factors of Post-stroke Dementia"</i></p> <p>Dr. Adrian WONG, The Chinese University of Hong Kong <i>"Prevention of Vascular Cognitive Impairment"</i></p> <p>Professor Wai Kwong TANG, The Chinese University of Hong Kong <i>"Post-stroke Depression"</i></p> <p>Dr. Alexander Yuk Lun LAU, The Chinese University of Hong Kong <i>"Developments of Integrative Medicine in Stroke Care"</i></p> <p>Dr. Suzanne Hoi Shan LO, The Chinese University of Hong Kong <i>"Promoting Post-stroke Recovery and Self-management"</i></p>
1530 – 1630	<p>Symposium on Cancer and Palliative Care: Improving Outcomes of Cancer and Palliative Care through Collaboration, Innovation and Transformation</p> <p>Ms. Carol LAM, Pamela Youde Nethersole Eastern Hospital <i>"Optimising Breast Cancer Survivorship Care: Pilot Nurse Clinic in Clinical Oncology"</i></p> <p>Dr. Dorothy Ngo Sheung CHAN, The Chinese University of Hong Kong <i>"A Pilot Randomised Controlled Trial of a Culturally Adapted Younger Women's Wellness after Cancer Programme for Younger Chinese Women with Breast Cancer: A Study Protocol"</i></p> <p>Dr. Jojo Cho Lee WONG, The Chinese University of Hong Kong <i>"Virtual Reality Intervention on Pain and Anxiety among Pediatric Patients Undergoing Venipuncture"</i></p> <p>Dr. Marques Shek Nam NG, The Chinese University of Hong Kong <i>"Using Social Capital to Address Palliative Care Needs of Patients with Advanced Organ Failure"</i></p>
1630 – 1730	<p>Symposium on Mental Health Care: A Glance at Psychological and Supportive Care for Family Carers across Illness Conditions</p> <p>Professor Wai Tong CHIEN, The Chinese University of Hong Kong <i>"An Effective Problem-solving Self-learning of Psychosis Care Programme for Family Carers"</i></p> <p>Dr. Yuen Yu CHONG, The Chinese University of Hong Kong <i>"Parents are People Too: How Better Psychological Flexibility Supports Families to Live in a Full, Rich and Meaningful Life"</i></p> <p>Dr. Ho Yu CHENG, The Chinese University of Hong Kong <i>"Fostering the Well-being of Family Caregivers of Stroke Survivors Using a Strength-oriented Psychoeducational Programme"</i></p> <p>Dr. Helen Yue Lai CHAN, The Chinese University of Hong Kong <i>"How Confucian Values Shape the Moral Boundaries of Family Caregiving"</i></p>

Conference Programme (Day 2)

Time (GMT +08:00)	29 May 2021 (Saturday)
0830 – 0915	Keynote Address II Professor Laurie BADZEK , The Pennsylvania State University <i>"Global Genomics Nursing Alliance: Journey to the Roadmap and Beyond"</i>
0915 – 1015	Plenary Session III Professor Paula MILONE-NUZZO , MGH Institute of Health Professions <i>"Defining Organisationally Minded Leadership"</i> Professor Susan D. RUPPERT , The University of Texas Health Science Center at Houston <i>"Building Resilience: A Professional Imperative"</i>
1030 – 1130	Symposium on Genetics and Genomics Development in Nursing Dr. Kathleen CALZONE , National Cancer Institute <i>"Education and Clinical Practice of Genetics and Genomics in the United States"</i> Professor Emma TONKIN , University of South Wales <i>"UK Nurses and Midwives Delivering Care Informed By Genomics: Learning from the Past and Looking to the Future"</i>
1130 – 1230	Round Table Discussion: New Realities for Nursing Education in the 21st Century Professor Wai Tong CHIEN , The Chinese University of Hong Kong Professor Nai Ying KO , NCKU Professor Lisa MCKENNA , La Trobe University
1230 - 1330	Break
1330 – 1415	Symposium on Chronic Illness Care I Dr. Bei WU , New York University <i>"Improving Long-term Care Quality in China"</i>
1430 – 1610	Symposium on Chronic Illness Care II Dr. Margaret BARTON-BURKE , The City University of New York <i>"Cancer, Survivorship, and Health Disparities: Complications of Chronic Illness Care"</i> Dr. Deirdre FETHERSTONHAUGH , La Trobe University <i>"Innovation and Evidence in Aged Care"</i> Dr. Ruth TAYLOR-PILIAE , The University of Arizona <i>"Tai Chi Exercise for Health and Well-being among Adults with a Chronic Illness"</i> Professor Sally Wai Chi CHAN , Tung Wah College <i>"Coping with Multiple Chronic Conditions: The Asian Perspective of a Global Problem"</i>
1630 – 1700	Awards Presentation & Closing Ceremony

Organising Committee

School Director

Professor Wai Tong CHIEN
Director and Professor
The Nethersole School of Nursing
Faculty of Medicine
The Chinese University of Hong Kong
Hong Kong



Conference Consultant

Professor Janita Pak Chun CHAU
Professor, The Nethersole School of Nursing
Assistant Dean (Alumni Affairs), Faculty of Medicine

Conference Chairperson

Dr. Helen Yue Lai CHAN
Associate Professor, The Nethersole School of Nursing

Subcommittee Chairpersons

Dr. Aileen Wai Kiu CHAN, Associate Professor (Practice in Nursing), The Nethersole School of Nursing
Dr. Dorothy Ngo Sheung CHAN, Assistant Professor, The Nethersole School of Nursing
Dr. Ho Yu CHENG, Assistant Professor, The Nethersole School of Nursing
Dr. Kai Chow CHOI, Senior Research Fellow, The Nethersole School of Nursing
Dr. Ka Ming CHOW, Associate Professor, The Nethersole School of Nursing
Dr. Sally Wai Sze LO, Professional Consultant, The Nethersole School of Nursing
Dr. Amy Yuli ZANG, Research Associate, The Nethersole School of Nursing

IT Support

Ms. Annie Suk Man LAW, Computer Technician, The Nethersole School of Nursing
Mr. Tony Chak Pan SO, Computer Technician, The Nethersole School of Nursing

Secretariat

Dr. Suzanne Hoi Shan LO, Assistant Professor, The Nethersole School of Nursing

Treasurer

Dr. Jojo Cho Lee WONG, Assistant Professor, The Nethersole School of Nursing

Administrative Support

Ms. Sammi So Ying NG, Project Coordinator, The Nethersole School of Nursing

Keynote Speakers



Professor Laurie BADZEK

LLM, JD, MS, RN, FNAP, FAAN

Dean and Professor
College of Nursing
The Pennsylvania State University
United States



Professor Barbara RIEGEL

PhD, RN, FPCNA, FHFSA, FAHA, FAAN

Edith Clemmer Steinbright Professor of
Gerontology
University of Pennsylvania School of Nursing
United States



Plenary Speakers



Professor Patricia M. DAVIDSON

PhD, MED, RN, FAAN

Professor and Vice-Chancellor
University of Wollongong
Australia



Professor Richard John GRAY

PhD (Lond.), DLSHTM, MSc, BSc (Hons), RN, FRSPH

Professor of Clinical Nursing Practice and Director
School of Nursing and Midwifery
La Trobe University
Australia



Professor Jennifer Hagerty LINGLER

PhD, MA, CRNP, FAAN

Professor and Vice Chair for Research
Department of Health and Community Systems School
of Nursing
Director, Outreach, Recruitment and Engagement
Alzheimer's Disease Research Centre
School of Medicine
Affiliate Faculty, Centre for Bioethics and Health Law
University of Pittsburgh
United States

Plenary Speakers



Professor Paula MILONE-NUZZO

PhD, RN, FHHC, FAAN

President and John Hilton Knowles Professor
MGH Institute of Health Professions
United States



Professor Elizabeth PETER

PhD, RN, FAAN

Professor
Lawrence S. Bloomberg Faculty of Nursing
Member, Joint Centre for Bioethics
Chair, Ethics Review Board, Public Health Ontario
University of Toronto
Canada



Professor Susan D. RUPPERT

PhD, RN, FNP-C, ANP-BC, FNAP, FCCM, FAANP, FAAN

PARTNERS Professor in Nursing
Distinguished Teaching Professor
Associate Dean, Graduate Studies
Cizik School of Nursing
The University of Texas Health Science Centre at
Houston
United States

Speakers for Round Table Discussion: New Realities for Nursing Education in the 21st Century



Professor Wai Tong CHIEN

PhD, MPhil, PGDip (NEd), BN (Hons), RMN, RTN, FHKAN, FAAN

Director and Professor
The Nethersole School of Nursing, Faculty of
Medicine
The Chinese University of Hong Kong
Hong Kong



Professor Nai Ying KO

PhD, RN

Director and Distinguished Professor
Department of Nursing, College of Medicine
NCKU
Tainan



Professor Lisa MCKENNA

PhD, MEdSt, GDLFAH, GDHealthAd&IS, BEdSt, RN, RM

Professor, Dean and Head
School of Nursing and Midwifery
La Trobe University
Australia



Speakers for Symposium on Genetics and Genomics Development in Nursing



Dr. Kathleen CALZONE
PhD, RN, AGN-BC, FAAN

Research Geneticist (Genetics Branch)
Centre for Cancer Research, Genetics Branch,
National Cancer Institute
United States

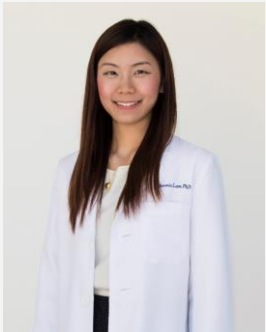


Dr. Emma TONKIN
PhD, BSc(Hons)

Associate Professor
Genomics Policy Unit (AB031), Faculty Of Life
Sciences and Education
The University of South Wales
United Kingdom



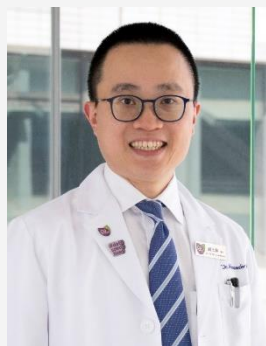
Speakers for Symposium on Stroke Care



Dr. Bonnie Yin Ka LAM

PhD, BSc

Research Assistant Professor
Division of Neurology, Department of Medicine and Therapeutics
Faculty of Medicine, The Chinese University of Hong Kong
Hong Kong



Dr. Alexander Yuk Lun LAU

MBChB (CUHK), SB (Chicago), MRCP (UK), FHKCP, FHKAM (Medicine)

Clinical Assistant Professor
Department of Medicine and Therapeutics, Faculty of Medicine
The Chinese University of Hong Kong
Hong Kong



Dr. Suzanne Hoi Shan LO

PhD, MSc, BN (Hons), RN

Assistant Professor
The Nethersole School of Nursing, Faculty of Medicine
The Chinese University of Hong Kong
Hong Kong



Professor Wai Kwong TANG

MD, MBChB, MRCPsych, FHKCPsych, FHKAM (Psychiatry), FRCPsych

Professor (Clinical)
Department of Psychiatry, Faculty of Medicine
The Chinese University of Hong Kong
Hong Kong



Dr. Adrian WONG

PhD, MSocSc (Clinical Psychology), BSc (Hon) (Psychology)

Adjunct Associate Professor
Department of Medicine and Therapeutics, Faculty of Medicine
The Chinese University of Hong Kong
Hong Kong

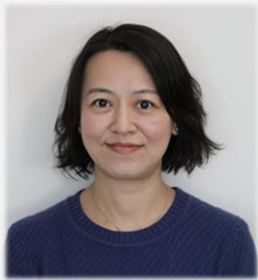
Speakers for Symposium on Cancer and Palliative Care



Dr. Dorothy Ngo Sheung CHAN

PhD, MN, BNurs (Hons), RN

Assistant Professor
The Nethersole School of Nursing, Faculty of Medicine
The Chinese University of Hong Kong
Hong Kong



Ms. Carol LAM

Deputy Ward Manager
Oncology/Outpatient Department
Pamela Youde Nethersole Eastern Hospital
Hong Kong



Dr. Marques Shek Nam NG

PhD, BNurs (Hons), RN

Research Assistant Professor
The Nethersole School of Nursing, Faculty of Medicine
The Chinese University of Hong Kong
Hong Kong



Dr. Jojo Cho Lee WONG

PhD, MSc (Health Care), BN (Hons), RN

Assistant Professor
The Nethersole School of Nursing, Faculty of Medicine
The Chinese University of Hong Kong
Hong Kong



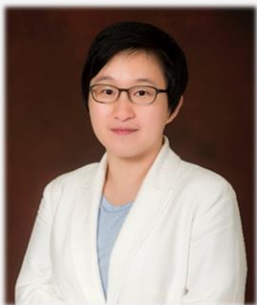
Speakers for Symposium on Mental Health Care



Dr. Helen Yue Lai CHAN

PhD, BSN(Hons), RN

Associate Professor
The Nethersole School of Nursing, Faculty of Medicine
The Chinese University of Hong Kong
Hong Kong



Dr. Ho Yu CHENG

PhD, RN (General and Psychiatric)

Assistant Professor
The Nethersole School of Nursing, Faculty of Medicine
The Chinese University of Hong Kong
Hong Kong



Professor Wai Tong CHIEN

PhD, MPhil, PGDip (NEd), BN (Hons), RMN, RTN, FHKAN, FAAN

Director and Professor
The Nethersole School of Nursing, Faculty of Medicine
The Chinese University of Hong Kong
Hong Kong



Dr. Connie Yuen Yu CHONG

PhD, MSc (EPB), MNurs, BNurs (Hons), RN

Assistant Professor
The Nethersole School of Nursing, Faculty of Medicine
The Chinese University of Hong Kong
Hong Kong



Speakers for Symposium on Chronic Illness Care



Dr. Bei WU
PhD, MS, BS

Dean's Professor in Global Health
Director, Global Health & Aging Research
Director for Research, Hartford Institute for Geriatric Nursing
Affiliated Professor, Ashman Department of Periodontology & Implant Dentistry
Rory Meyers College of Nursing, New York University, United States



Dr. Margaret BARTON-BURKE
PhD, MS, BS

Director of Nursing Research
Memorial Sloan Kettering Cancer Centre
The City University of New York, United States



Professor Sally Wai Chi CHAN
PhD, Mc, BSc, Dip Ed., RN, FAAN

President
Tung Wah College, Hong Kong



Dr. Deirdre FETHERSTONHAUGH
PhD, MA, BA, Renal Cert, Dip Appl Sci (Nursing), RN

Director/Associate Professor
Australian Centre for Evidence Based Aged Care
Australian Institute for Primary Care and Ageing
College of Science, Health and Engineering
La Trobe University, Australia



Dr. Ruth TAYLOR-PILIAE
PhD, RN, FAHA, FAAN

Associate Professor
College of Nursing, The University of Arizona
United States

Speakers for Workshops 1 & 2



Professor Edwin Shih Yen CHAN

PhD, BVMS (1st class Hons), BSc

Chief Scientific Officer, Singapore Clinical Research Institute
Director, Cochrane Singapore
Associate Professor, Duke-NUS Medical School, Singapore

Dr. Liang GUO

MPH, BMed (Fudan), Cert (FETP)

Epidemiologist, Singapore Clinical Research Institute
Member, Cochrane Singapore



Dr. Luming SHI

MSc (Clinical Sciences), MSc (Health Economics and
Pharmacoeconomics), MBBS

Head, Epidemiology, Singapore Clinical Research Institute
Deputy Director, Cochrane Singapore
Adjunct Assistant Professor, Duke-NUS Medical School, Singapore



Dr. Yoko Kin Yoke WONG

PhD, MMedSc (Public Health), BSc (Biology)

Senior Epidemiologist, Singapore Clinical Research Institute
Senior Epidemiologist, Tan Tock Seng Hospital
Member, Cochrane Singapore



Dr. Charles Qishi ZHENG

MD, MPhil

Epidemiologist, Singapore Clinical Research Institute
Member, Cochrane Singapore



Dr. Julie Yanan ZHU

PhD (Pharmacology) , MSc (Pharmacology), BE (Pharmaceutics)

Epidemiologist, Singapore Clinical Research Institute
Member, Cochrane Singapore



Speakers for Workshops 3 & 4

Dr. Helen Yue Lai CHAN
PhD, BSN(Hons), RN

Associate Professor
The Nethersole School of Nursing, Faculty of Medicine
The Chinese University of Hong Kong
Hong Kong



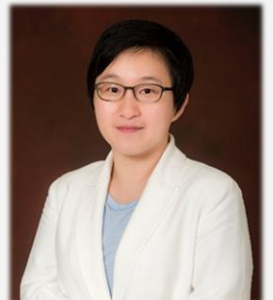
Dr. Dorothy Ngo Sheung CHAN
PhD, MN, BNurs (Hons), RN

Assistant Professor
The Nethersole School of Nursing, Faculty of Medicine
The Chinese University of Hong Kong
Hong Kong



Dr. Ho Yu CHENG
PhD, RN (General and Psychiatric)

Assistant Professor
The Nethersole School of Nursing, Faculty of Medicine
The Chinese University of Hong Kong
Hong Kong



Dr. Connie Yuen Yu CHONG
PhD, MSc (EPB), MNurs, BNurs (Hons), RN

Assistant Professor
The Nethersole School of Nursing, Faculty of Medicine
The Chinese University of Hong Kong
Hong Kong



Dr. Ka Ming CHOW
DN (CUHK), MN (CUHK), BN (CUHK), PGDip in Midwifery (HA)

Associate Professor
The Nethersole School of Nursing, Faculty of Medicine
The Chinese University of Hong Kong
Hong Kong



Dr. Suzanne Hoi Shan LO
PhD, MSc, BN (Hons), RN

Assistant Professor
The Nethersole School of Nursing, Faculty of Medicine
The Chinese University of Hong Kong
Hong Kong



Dr. Marques Shek Nam NG
PhD, BNurs (Hons), RN

Research Assistant Professor
The Nethersole School of Nursing, Faculty of Medicine
The Chinese University of Hong Kong
Hong Kong



Professor Winnie Kwok Wei SO
PhD, RN, FAAN

Professor
The Nethersole School of Nursing, Faculty of Medicine
The Chinese University of Hong Kong
Hong Kong



Pre-conference Workshops

Workshop 1

Interpreting Systematic Reviews and Using Cochrane Reviews

This one-day workshop provides an introduction to Cochrane evidence and enables participants to use and interpret systematic reviews.

26 May
(Wednesday)

0900 – 1700
(GMT +08:00)

Workshop 2

Systematic Reviews and Evidence Synthesis

This two-day workshop is designed to equip participants with knowledge and skills in planning and conducting a systematic review.

26 – 27 May
(Wednesday
& Thursday)

0900 – 1700
(GMT +08:00)

Workshop 3

Research Writing Skill Workshop

In this workshop, four speakers with extensive experience in publication and grant application will share with participants the essential skills for preparing research proposals and manuscripts for high-impact journals.

27 May 2021
(Thursday)

0930 – 1700
(GMT +08:00)

Workshop 4

Preparation For Doctoral Study

This workshop will provide participants with practical tips on:

- Identifying a research topic for doctoral study;
- Preparing for the application for Master of Philosophy – Doctor of Philosophy (MPhil-PhD) in Nursing Programme or Doctor of Nursing Programme; and
- Improving presentation skills for admission interview.

27 May 2021
(Thursday)

0930 – 1700
(GMT +08:00)

Registration Rates

Type	Early bird registration ¹ (until 31 Jan 2021)	Regular registration
Full conference (28 – 29 May 2021)	HKD 400	HKD 600
Full conference + workshop 1 ² (26, 28 – 29 May 2021)	HKD 800	HKD 1200
Full conference + workshop 2 ² (26 – 29 May 2021)	HKD 1200	HKD 1800
Workshop 3 (27 May 2021) ^{2, 3}	Free	Free
Workshop 4 (27 May 2021) ^{2, 3}	Free	Free

¹ To enjoy the early bird discount, registration with full payment must be received on or before 31 Jan 2021.

² Places are limited and will be allocated on a first-come, first-served basis.

³ If the participants of Workshop 3 & Workshop 4 would like to join the full conference, please register separately.
 The conference and workshop fees include registration fee (HK\$30) and administration fee for self-funded events, scientific sessions and workshop materials (as applicable).

Conference Venue

The conference will be conducted in a virtual mode.



Important Dates

Abstract submission opens	June 2020
Deadline for abstract submission	15 January 2021
Notification of abstract acceptance	25 January 2021
Registration opens	15 January 2021
Deadline for early bird registration	31 January 2021
Deadline for registration	23 May 2021
Pre-conference workshops	26-27 May 2021
Conference	28-29 May 2021
Opening ceremony	28 May 2021

Language of Conference

The official language of the Conference and Pre-conference Workshops is English.

Best Presentation Awards

There will be four categories of awards:

1. Best student oral presentation awards
2. Best student poster presentation awards
3. Best oral presentation awards
4. Best poster presentation awards





PAN-PACIFIC NURSING CONFERENCE
28-29 MAY 2021

*From Evidence to Impact:
Co-designing Care for Future*



This material/event is funded by the Professional Services Advancement Support Scheme of the Government of the Hong Kong Special Administrative Region.

Any opinions, findings, conclusions or recommendations expressed in this material/any event organised under this project do not reflect the views of the Government of the Hong Kong Special Administrative Region or the Vetting Committee of the Professional Services Advancement Support Scheme.

